

Saltfork Craftsmen Artist-Blacksmith Association

June 2013



Saltfork Craftsmen enjoy day of forging at the Beautiful Historic Fort Gibson site. Members like Gerald Brostek pass on their knowledge to future blacksmith during the day of forging under the shade trees. This was just one of such meeting scheduled around the state during the month of May. See page 8 for more on this meeting.

Saltfork Craftsmen
Artist-Blacksmith Association
Officers and Directors

President/cones:
Byron Doner 405-650-7520
6520 Alameda, Norman Okla.
byrondoner@esok.us

Vice-President/events: 580-381-0085
David Seigrist
P.O. Box 163 Hollis, Ok 73550
dseigrist2004@yahoo.com

Sec-Treas. Dan Cowart 918-440-0653
10380 N. 4010 Road
Wann, Ok 74083
ddcowart@gmail.com

Director/Editor: Diana Davis 580-549-6824
23966 NE Wolf Rd.
Fletcher, Ok 73541
Diana.copperrose@gmail.com

Director/tool box tools:
Mandell Greteman 580-592-4460
Rt. 2 Box 130 Foss, Okla. 73647
mandell01@windstream.net

Director/swage blocks: Bill Kendall 918-742-7836
1756 E. 59th St Tulsa Ok. 74105
wwkendall@aol.com

Director: Mark Carter 405-964-5754
34509 Hazel Dell Rd.
McLoud Ok. 74851
mcarteriron@gmail.com

Assignments:

Webmaster:
Dodie O'Bryan
Pawnee, Ok
scout@skally.net

Workshop Coordinator:
Tracy Cowart 918-376-2382
9911 N. 117th E. Ave.
Owasso. Ok
draftsman@cox.net

A Note from the Prez...

What a month so far!

On the first Saturday I had went to my place in southeast Ok. With plans to attend the meeting at Ft. Towson. I had to miss it because a good friend of mine that lived in Cloudy Ok. Died and the funeral was on Saturday.

I went to the Northeast meeting at Fort Gibson and got there just in time to see the last equipment being loaded up to go home! I believe I was the last to leave and was only there for about ten minutes. I did get to spend a little more time at "the Castle of Muskogee" where several club members were demonstrating. The Castle puts on a medieval faire each weekend in May. It is like a whole town or village all done up like medieval times. If you haven't been you should go.

The third Saturday was another one of those days when two events are going on at the same time. First I went to Guthrie for the Southwest Iron Swap meet at David King's shop. Saw some members there and lots of goodies to work/play with. As usually Steven Knisely was inside hammering steadily at the smithy. Then it was off the Medicine Park where Linda and Heather Morefield were hosting the South Central meeting. Got there at about 12:30 just in time to swap trade items with Gerald Franklin before he headed out for home. I'm not sure if the turnout was light or if some had already left by the time I came dragging in.

The Moore tornado leveled houses within a block of my daughter's but luckily hers only had a little damage. I hope the rest of our club members faired as well or better. I pray for all that lost loved ones (Especially children) in the storm.

Diana has already been contacted by the state fair wanting to know if our club will be there this year. If you would like to be involved please contact her or myself. It will sure help if we know we can count on folks to demo and possibly help organize, set up, and tear down.

June has a "fifth" Saturday and I think there is a basic blacksmithing workshops planned. Check out the meetings (page 3) to get details.

There are some open meeting dates, so please folks get involved and have a meeting. It can be at your home, shop, a park, lake or even a county fairgrounds. We just need more involvement which leads to more hammering fun.

Happy hammering! Byron

The Saltfork Craftsmen Artist-Blacksmith Association, a non-profit organization of amateur and professional artist and craftsmen, publishes this newsletter monthly. Our purposes are the sharing of knowledge, education and to promote a more general appreciation of the fine craftsmanship everywhere. We are a chapter of the Artist-Blacksmith Association of North America.

Material from this newsletter may be freely copied without permission for non-profit purposes. Please credit the author and this publication.

Visit our Saltfork Craftsmen Website:
www.saltforkcraftsmen.org

JUNE MEETINGS...

- SE Regional meeting date is open with no host.
- NE Regional meeting will be hosted by Mike Krukoski on June 8th at 22558 E. 320 Rd in Chelsea Ok. his email address is quadkfarm@yahoo.com or call him at 636-297-0329. his trade item is a garden item. Lunch will be provided so bring a side dish to help out.
- SC regional meeting will be hosted by Larry Mills at his shop on June 15th at his shop at 3510 Charleston Rd. Trade item is any flower or plant, Lunch is being catered by Catering Creations of Norman. You might want to RSVP to help them with a count for lunch. For more information you can email Larry at l-mills@cox.net Directions: Off of Tecumseh Rd. (Approximately 2 miles E of I-35) If familiar with Norman, approximately 1 mile West of Porter on Tecumseh ..south side of Road.
- NW regional meeting will be hosted by Mandell Greteman on June 22nd at his home in Foss Okla. Trade item is anything made from a Rail Road Spike. Lunch is being provided so bring a side dish to help out. Mandel can be contacted by calling 580-515-1292. His home is 2 blocks north of Rail Road tracks, west to dead end.

June workshops:

June 29th there will be a Basic blacksmithing Class held in the NE Region at Bill Kendall's place. The members that were put on a waiting list from the one in March will have first chance to fill the spots available in this one. If you are interested in this class you need to contact Tracy Cowart to see if room is available the cost and location.

July Meetings...

- * **SE Regional meeting date is open with no host.**
- * **NE Regional (July 13th) will be hosted by Chuck Waite of Persimmon Hollow Village. 918-845-6030 or email: trimmec@yahoo.com. The trade item is something with a flower. Lunch will be provided but bring a side dish to help out.**
- * **SC Regional (July 20th) will be hosted by Bill and Diana Davis, Trade item will be a campfire/cooking utensil. Lunch of hotdogs/chili dogs will be provided so bring a side dish to help. 580-549-6824**
- * **NW Regional (July 27th) meeting will be hosted by Roy Bell at the Route 66 Museum Blacksmith shop in Elk city. The trade item is a flower. Lunch will be provided so bring a side dish to help out.**

Oklahoma State Fair 2013

Its getting to be that time again. Melinda Person from the State Fair has been in contact with the board to see what are plans are concerning being at the State Fair. We have been participating in the Centennial Frontier Experience for the past 4 years and have been having more of the public come by each year to visit and pick up one of our handmade ironwork pieces.

The Fair this year goes from September 12-22. What Byron and I need is for members (especially those that have helped in the past) to look at the calendar at these dates and see when or if they will be able to help. I know there are special dates like senior day or school day that some prefer to work. We are expected to be at the fair from 10:00 to about 6:00 each day of the fair. There are no rules that say you can't be there earlier or stay later, just that the other events in that area shut down and there is not as many people coming through and usually by 6:00 pm you will probably be ready to get out of there.

We have tried several setup and I never get any feedback as to what has worked best. Two forges set up goes through a lot of coal and sometimes you look around the a forge is not being used because the worker needed a break. One forge set up works as long as everyone is willing to share, that means forging for about an hour and then letting someone else forge while you rest, walk around or visit with the public. Let us know how you think it works best. I also think that 3 members in the forging area at any one time is enough. Get with me with your ideas. We want to make this fun for everyone. If you plan to work, start now building up your inventory of fine ironwork.

Diana

May S/C Meeting Notes

Gerald Franklin

The South Central meeting for May was hosted on the 18th by Linda and Heather Morefield in Medicine Park. The weather was excellent. Heather had a coal forge going in the shop and when I got there Rickey Vardell was busy forging a project. Larry Roderick was busy with some copper roses when he wasn't busy dealing in Kaowool and rigidizer.

As usual, the Medicine Park Mauraders fed us well with beans and cornbread. And, as usual the attendees went all out in bringing side dishes and desserts. I think we ate enough cake, pie, and cobbler to put two or three dentist's kids through college.

We only had two trade items. This month's item was a yard art item. As I said, there were only two items so the "trade" was greatly simplified: Byron Doner and I traded with each other.



Byron Doner's flower

Turnout for the meeting was a little light, probably due to other events going on around the state. I counted about twelve head of people there.

May NW Regional Meeting

The NW meeting was held on May 25th 2013 at Elk City Museum. Gary had a really good turn out, there were around 30 working in the shop taking turns on the four forges. We had members from Eastern Oklahoma and Northern California as well as the NW Region. There were five hammers heads made as well as the trade items (something made from a horse shoe). Being held at the Route 66 Museum brings lots of visitors. We had around 50 visitors to the blacksmith shop area. They really seemed to enjoy watching the blacksmith work. The meal was outstanding. We enjoyed smoked ribs, brisket and ham along with Cajun rice. There was too much to eat. Would like to Thank every one that brought something to the meeting.

Thanks....Mandell Greteman



NW Regional meeting (April 26, 2013)

Don Garner hosted the April meeting for the NW region and it was reported to have been a bit success. There were about 20 guest with at least three forges going all the time. There was a sheep horn made, fork and spoon, punches, fire poker and copper bands. It was a great day to be together. There were a lot of stories being told. Ed showed us his iron glove he had made. Outstanding meal was served and I would like to thank everyone for the food they brought.

By Don Garner



Picture of a nice hold-down forged by Jim Carothers. He says he has been working on his corners. Looks good to me. He also send a link to a video on PBS. It is a good one made for the Wood Wright Shop. Check it out....

<http://video.pbs.org/video/2202087803>



Great Southern Plains Rendezvous.

By James Erb

The annual Great Southern Plains Rendezvous was held again at Williams Boy Scout Camp near Cleo Springs, Ok. March 19th-20th 2013. Saltfork Craftsmen have been invited to this gathering of 400-600 cub and boy scouts for as long as it has been in existence. Fred Voss kindly donated his time and energy again this year bringing his forge to the gathering. James Erb also a Saltfork member was participating as a Mountain man and wandered into Fred's display and gave a helping hand to pound some steel and answer questions from the kids and parents with Fred. There were a few hardy souls at the event that were interested enough to try pounding some steel and they were guided into turning out some nice steak turners. Fred is a really great guy to hang around with and was making and giving away items as fast as he could turn them out. The kids really enjoyed his swords made from nails and his demonstrations.



2013 Duncan Natural Resource Day

Gerald Franklin

On May 21, I set up to demo at the Stephens County Fairgrounds in Duncan. We were part of the 2013 Duncan Natural Resource Day sponsored by the Stephens County Conservation District and the USDA Natural Resources Conservation Service. Our guests for the day were twelve classes of fourth graders from the Duncan Public School system.

In addition to our smithing demo, there were several other exhibits set up. I didn't get to see all of them but the ones that I did see were pretty good. There were exhibits dealing with soil erosion, fish and wildlife management, fire prevention, etc. Some Halliburton chemists were demonstrating some of the chemical aspects associated with cementing oil wells had the most interesting one that I saw. I'm not real sure what blacksmithing has to do with natural resource conservation, perhaps because we were some of the earliest re-cyclers. You ever see a smith worth his salt who didn't prowl through a junk pile looking for materials to forge into something new?

We were set up inside the livestock show arena so weather really wasn't a factor. The students cycled by in fifteen-minute intervals and I had to make something that was simple so that I could finish the project while the group was there. I chose the old stand-by items: S-hook. This was another good school demo but I was more than a little numbed from hearing myself do the same spiel twelve times in one day.



Northeast Regional Meeting Report

by Gerald Brostek

THE EARLY MORNING FOG WAS HEAVY AS I CROSSED THE ARKANSAS RIVER IN ROUTE TO THE FORT GIBSON HISTORIC SITE. AS I WAS SETTING UP MY FORGE, ANVIL, AND OTHER NECESSARY EQUIPMENT THE SUN WAS DESPERATELY TRYING TO BURN THROUGH THE FOG AND SOON SUCCEEDED IN DOING SO. SHORTLY, OMAR REID ARRIVED AND SAID HE HAD TO TURN OFF THE 21 CENTURY ELECTRONIC SECURITY ALARM. I JOKING TOLD HIM THIS IS A 1730S FORT AND HE SHOULD HAVE JUST POSTED A SENTRY. SOON THEY WERE ARRIVING IN DROVES AND A FINAL COUNT OF 36 HEAD WAS MADE. ABOUT 20 MEMBERS AND MANY GUESTS. SEVERAL OF THE GUESTS WERE SENT TO THIS MEETING BY OUR SALTFOK MEMBERS WHO ARE WORKING THE RENAISSANCE FARE AT THE CASTLE OF MUSKOGEE. SEVERAL GOT SOME HANDS-ON TRAINING AND INSTRUCTIONS BY FOLKS LIKE DAN COWARD, TRACY COWARD, DAVID KNIGHT, JAMES MABERRY, OMAR REID, AND SEVERAL OTHERS. THESE SALT-FORK MEMBERS BROUGHT THEIR PORTABLE EQUIPMENT TO FORGE A TRADE ITEM, BUT ENDED UP SPENDING A LOT TIME ASSISTING IN TEACHING AND DEMONSTRATING AS I WAS OVERWHELMED WITH THE MANY QUESTIONS COMING IN RAPID FIRE FROM ALL DIRECTIONS (*thanks Guys*). THERE WERE 5 COAL FORGES AND ONE PROPANE GOING. I DEMONSTRATED HOW I MAKE A COOKING TRI-POD AND THEN ASSISTED 6 OTHERS IN COMPLETING ONE. A LOT OF KNOWLEDGE AND GENERAL BLACKSMITHING INFORMATION WAS SHARED BY ALL AND WE MAY GAIN A FEW MORE MEMBERS FROM THIS MEETING AS THE INTEREST IN OUR GREAT AND NOBLE CRAFT APPEARS TO BE GROWING RAPIDLY. OMAR AND THE FORT GIBSON HISTORICAL SITE MAINTENANCE CREW DID A FINE JOB OF HAVING THE NOON MEAL READY AND WE ALL ATE WELL. ALSO THANKS TO THOSE WHO BROUGHT SIDE DISHES.



Upcoming events to keep in mind...

DRUMRIGHT DISCOVERY DAYS

Saturday June 8, 2012

10am-3pm

**Antique Cars, Quilt show, Antique tractors, Arts, Crafts and More
Drumright Community Historical Museum
301 East Broadway
Drumright Oklahoma**



[Www.drumrighthistoricalsociety.org](http://www.drumrighthistoricalsociety.org)

Or contact Jim Carothers, he has demonstrated at this event for several years.

- ♦ Chisholm Trail Festival in Yukon, Ok on June 1st. Campgrounds will be open Thursday for camping if any of your members wish to come early. The Chamber of commerce chuck wagon breakfast is scheduled for 8:am Friday, May 31 and dinner Friday evening for reenactors and volunteers at 6:30. We will also have a volunteer area behind the sage with drinks and snacks for lunch on Saturday, June 1. Some of the encampments will not break down until Sunday– last year it was nice to have a rest and visit after the Festival closed on Saturday. (for info call) Dixie Clement 405-641-6164
- ♦ Pawnee Bill's Wild West Show, June 15, 22, 29th 3-7pm. The Wild West organizers have invited Saltfork Craftsmen to come and use the Ranch Blacksmith shop during their annual Wild West Show to demonstrate for the public. Jim Carothers has participated in this each year so he can give you more information about what to expect. This is a great opportunity to demo for the public and then go down and watch a reenactment of Pawnee Bill's original Wild West Show. There are three Saturdays available to participate in this event. It is a small shop so space is limited. Jim Carothers (frontiershop@wildblue.net)
- ♦ Annabell's Fun Farm in Welch Okla. Owned by Tim Wright is looking for anyone interested is setting up on a weekend during their fall activities. If you are interested in participating in this fall pumpkin patch/corn maze and other family friendly activities beginning September 21 through November 3rd. Fridays Saturdays and Sundays you can view their website at www.annabellesfunfarm.com

Blacksmithing at Fairview, Okla.

By: Mandell Greteman

The Satlfork Craftsmen NW Region members were a part of the Farm Day Theme at Fairview, Oklahoma on May 9th 2013. There was a display of blacksmithing, nail making and S hooks were made. There was about 250 kids that came through. Mandell Greteman, Gary Seigrist, Don Garner and Ron Lehenbauer were the blacksmiths.



2013 tool box list

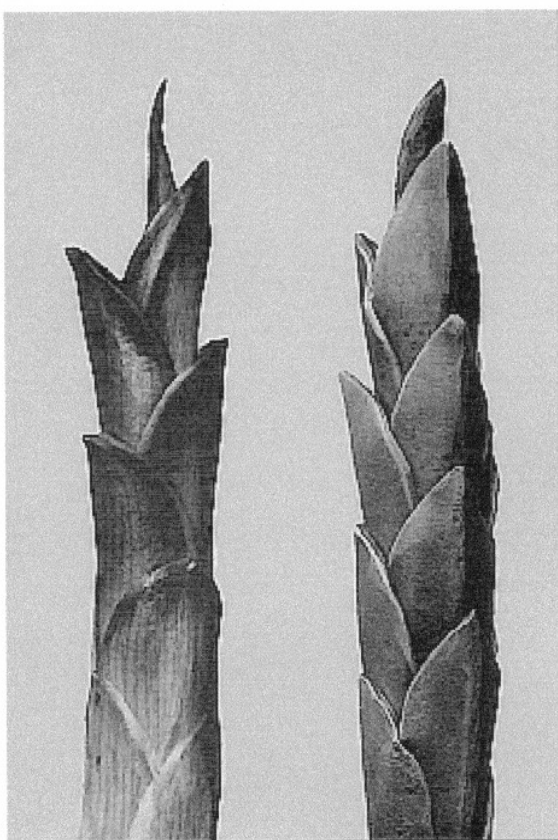


Item

Donated By:

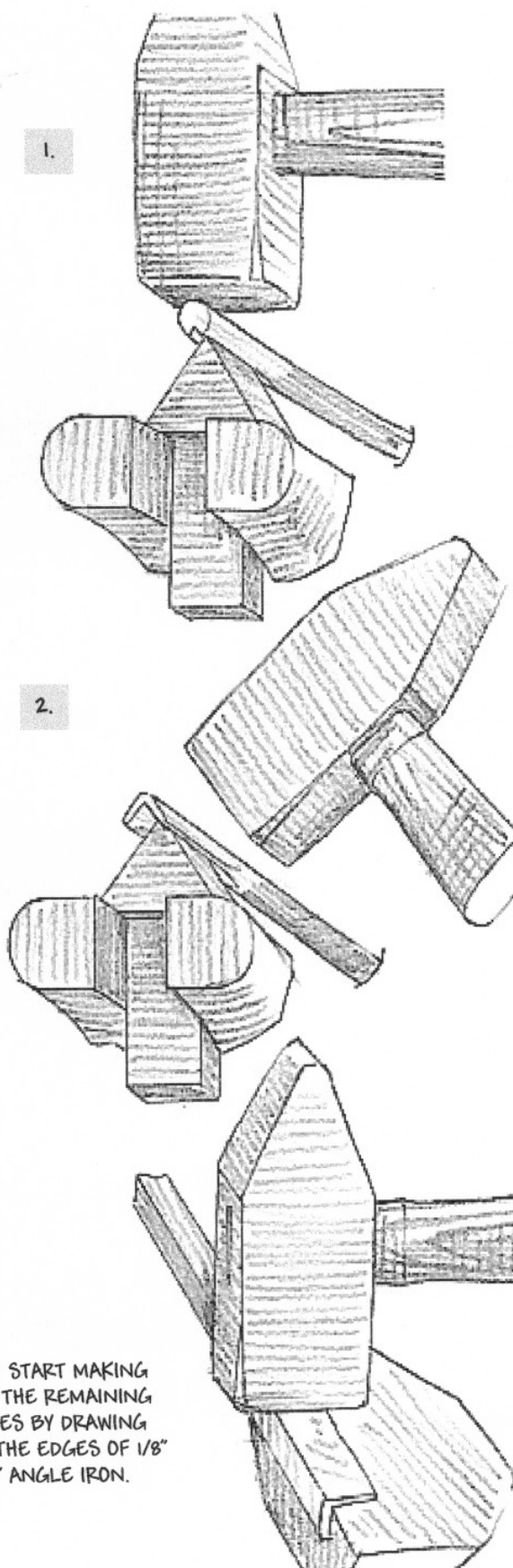
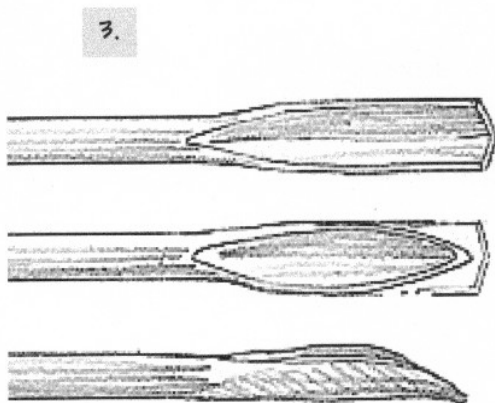
- | | |
|---|-----------------------|
| 1. Box | Charles McDevitt |
| 2. Cross Peen hammer | |
| 3. Straight peen hammer | |
| 4. Rounding hammer | |
| 5. Wooden mallet | |
| 6. Handled slot punch 1/2 | |
| 7. Handled slot punch 3/4 | |
| 8. Handled slot punch | |
| 9. Hot rasp | Gerald Brostek |
| 10. Tongs | |
| 11. 1/4 bolt | |
| 12. 3/8 bolt | |
| 13. 1/4 V bit | |
| 14. 3/8 V bit | |
| 15. 1/2 V bit | |
| 16. 3/4 V bit | |
| 17. 1/4 flat | |
| 18. 3/8 flat | |
| 19. 1/2 flat | |
| 20. 3/4 flat | |
| 21. Farrier's | |
| 22. Scrolling | |
| 23. Side crip | |
| 24. Pick-up tongs | |
| 25. Fire Tools (shovel, rake, poker) | |
| 26. Hot Cut Hardy | |
| 27. Twisting wrench | |
| 28. Treadle/Hand Hammer Tooling | |
| 29. Set of punches and holder | |
| 30. Center punch | |
| 31. Eye punches | Gerald Franklin |
| 32. Chisel (large) | |
| 33. Chisel (small) | |
| 34. Slitting Chisel | |
| 35. Hold down | |
| 36. Flat wire brush with handle | Donated at picnic ??? |
| 37. Set of monkey tools | |
| 38. Rivet setting tool | |
| 39. Hacksaw | |
| 40. Bolter plate | |
| 41. Square | |
| 42. Dividers/compass | |
| 43. Scribe | |
| 44. Bending forks | |
| 45. Spring swage/fuller | |
| 46. Flux spoon | |
| 47. Flux (Iron Mountain) | |
| 48. Metal folding ruler | |
| 49. Soapstone and holder | Gerald Brostek |
| 50. Ball tool (round blunt nose punch) | |
| 51. Hook ruler | |
| 52. Finish wax | |
| 53. Brass brush/steel brush | Diana Davis |

Remember, if you have tools for the toolbox they need to be gotten to Mandell Greteman. His contact information is in the Board of Directors section in the front of the newsletter.

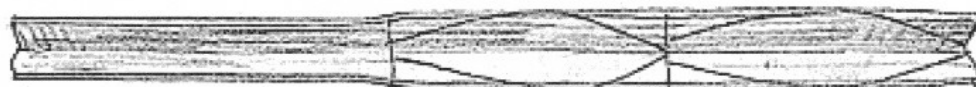


Japanese Hosta Sprout

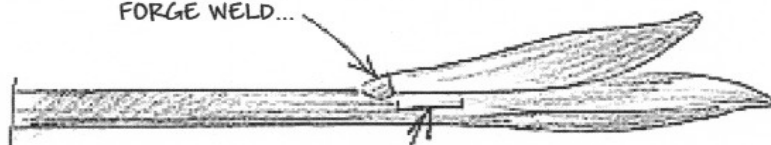
1. BEGIN FORGING THE END OF 3/8" ROUND STOCK OVER A 45° HARDY TOOL. 2. CONTINUE DRAWING DOWN THE SIDES OF THE STOCK TO FORM AN ANGLE 3. GRIND AND FILE THE ANGLE INTO A LEAF SHAPE.



4. START MAKING THE REMAINING LEAVES BY DRAWING OUT THE EDGES OF 1/8" X 1/2" ANGLE IRON.

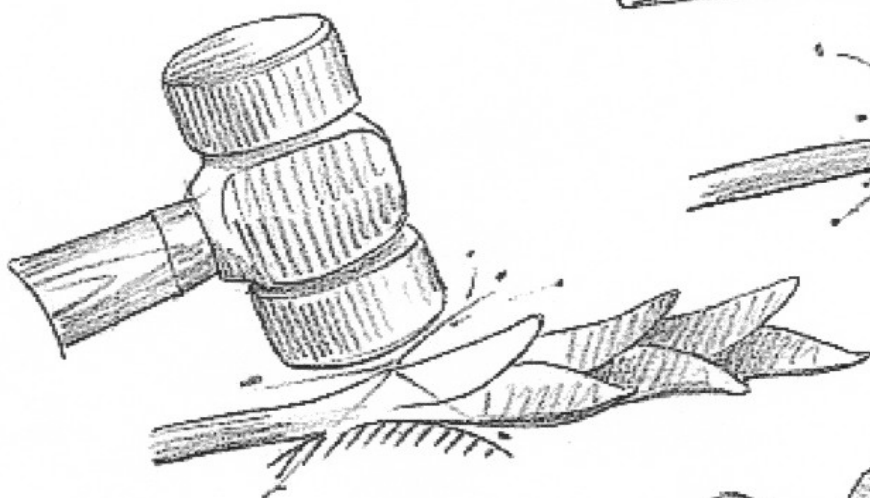
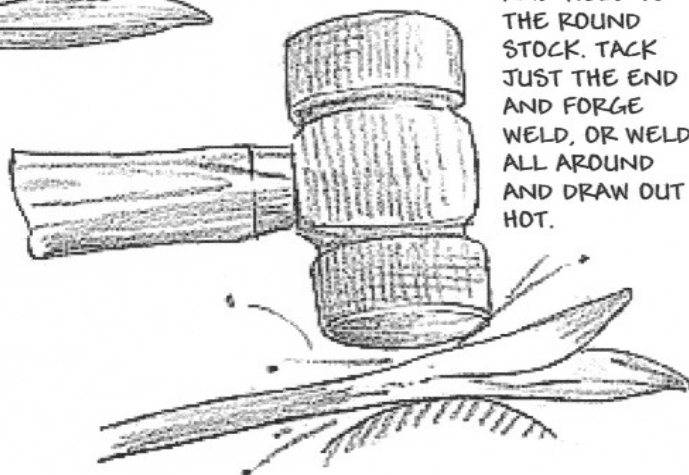


TACK FOR
FORGE WELD...



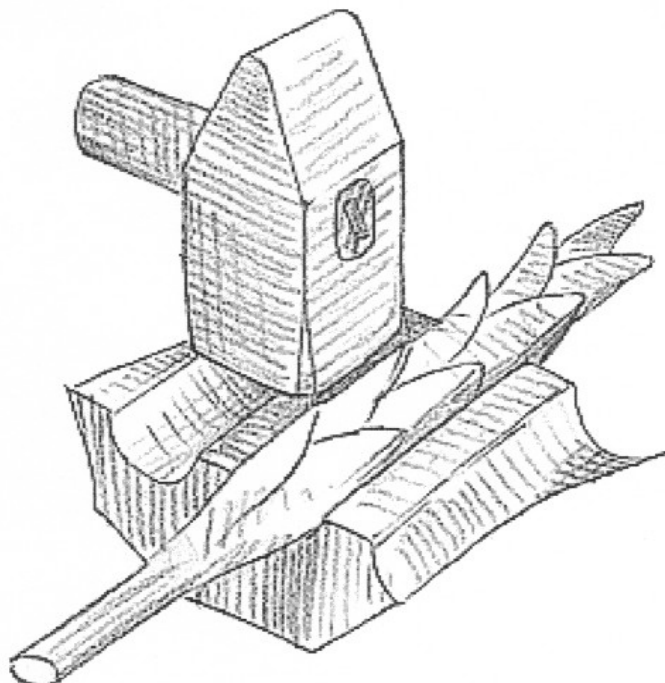
...OR CONTINUE WELDING
ALL AROUND

5. LAY OUT
LEAF
SHAPES ON THE
FORGED
PORTION OF THE
ANGLE
IRON, CUT OUT,
AND WELD TO
THE ROUND
STOCK. TACK
JUST THE END
AND FORGE
WELD, OR WELD
ALL AROUND
AND DRAW OUT
HOT.



6. CONTINUE WELDING ON
LEAVES EVERY 120° IN A SPIRAL
PATTERN DOWN THE ROUND STOCK.

7. FINISH BY PACKING THE
LEAVES NEAR THE BASE
TIGHT AGAINST THE CORE.



This Feature has been provided by the Blacksmith's Journal, for information about ordering go to www.blacksmithsjournal.com or write to: Hoffmann Publications, Inc. P.O. Box 115, New Haven MO 63068

JOHN GRAHAM'S

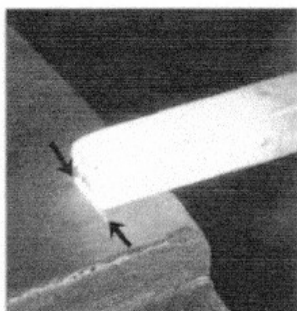
Forging a Pair of Open-Jaw Tongs

John Graham:
Sacramento, California.

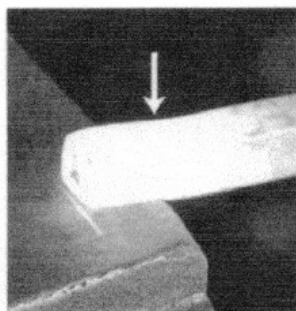
The photographs below are of the *Hammer's Blow* editor conducting a tong-making class at the California Blacksmith Association's instructor training class. The class is held at the annual Weaverville Hammer-in, each March.

HB staff starts his open (flat jaw) tongs by laying off $1\frac{1}{8}$ " from the nearside edge of the anvil face. He used $\frac{3}{4}$ " square stock for the jaw and boss assembly and $\frac{1}{2}$ " diameter round bar for the forge-welded reins.

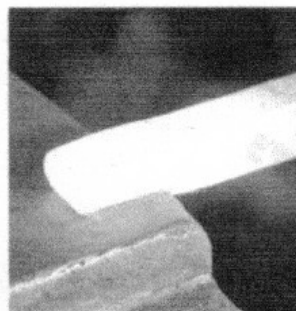
Instead of the usual turn left or turn right, HB staff states that you need to constantly turn the top surface of the stock away from your hammer-hand to make a pair of tongs to fit your tong hand. Turn the top of the stock towards your hammer-hand if you want to make a pair of tongs to be held in the hammer-hand for use at the power hammer.



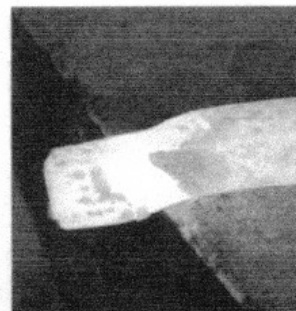
Lay off $1\frac{1}{8}$ " from the nearside edge of the anvil



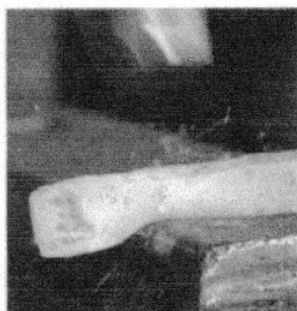
Use half-faced blows initially



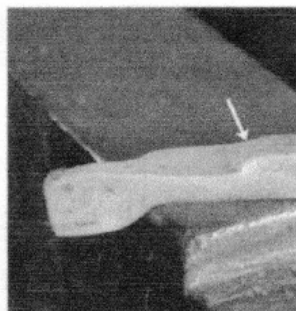
Walk the hammer towards the end of the bar



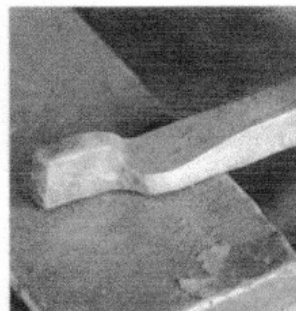
Draw to $\frac{1}{2}$ -bar thickness. Turn the top of the bar away from your hammer hand



Hold bar at an angle to the offside edge and draw down the boss



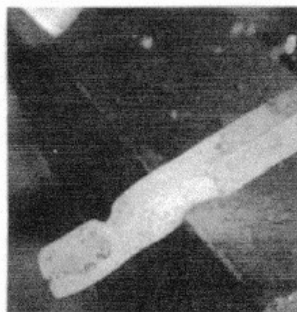
Use half-faced blows here. Dig in to the parent bar with the heel of the hammer



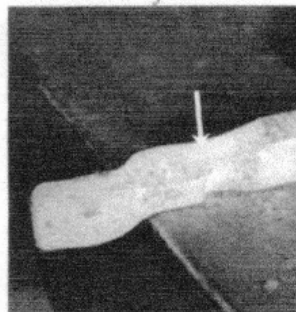
The boss is half the parent bar thickness for at least the width of your hammer



Again, turn the top of the bar away from your hammer hand



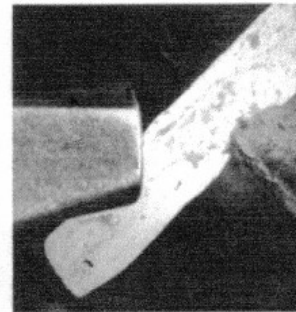
Use half-faced blows to define the rear of the boss



Dress any lipping and cupping as it occurs



Dress the front of the boss over the offside edge of the anvil



HB staff likes a parallelogram shaped boss to prevent the reins from swinging open

PHOTO ESSAY - FORGING TONGS

HB staff likes to work over a round edge of the anvil face to prevent any cracks from forming at the transition points.

The boss is drawn to a parallelogram to prevent the reins from swinging open if one rein is dropped during use.

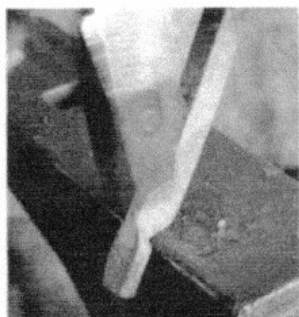
Any lipping or cupping is dressed quickly to prevent cold shuts. Leaving it to develop can cause problems.

The end of the jaw is tapered to help the tongs navigate through the coals of a fire and aid in stock pick-up.

The jaw is laid off the offside edge to start the punching process for the rivet hole. The hole is back punched on the anvil face and drifted to size over the pritchel hole.

The jaw/boss assembly is cut from the bar allowing enough stock to draw a short rein for forge welding purposes. Leave the parent bar with an square, un-forged end.

Protect the boss as you draw down the rein. The cut is made from the flat side of the jaw/boss assembly to aid in forging the scarf for forge welding on the reins.



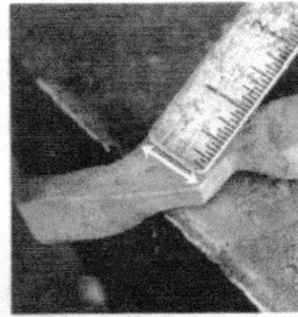
Work equally from all sides of the boss



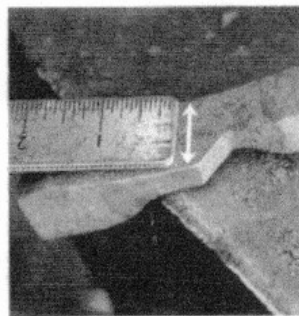
Cycle through each step a few times



Dress any lipping and cupping as it occurs



Strive for 1" between both sets of flats



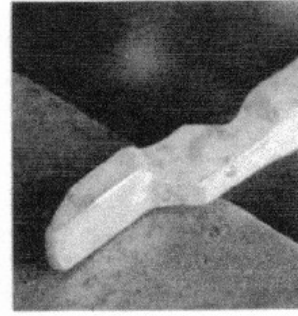
The second set of flats shown



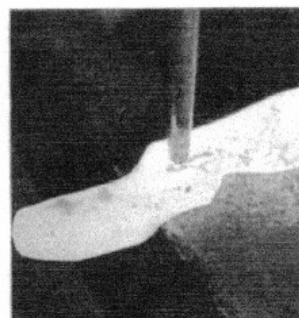
Now dress the sides of the jaw—taper the end slightly



The end is drawn to a slight taper



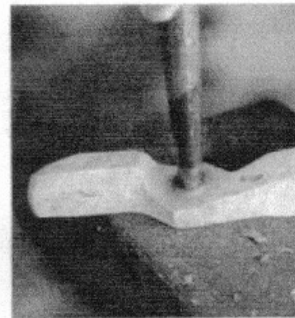
The taper helps the tongs slip past coals in the fire and pick up stock



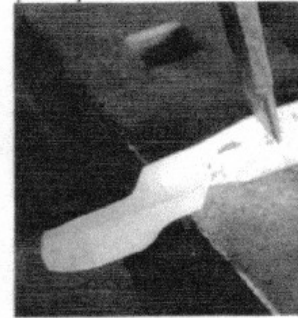
Place the jaw over the offside edge to begin your punched hole



Back-punch on the face of the anvil with the jaw protected from damage



Drift to rivet size over the pritchel hole



Slope the chisel to maintain a vertical cut to the parent bar

FORGING TONGS

The scarfs should fit together with minimal gap between them—allowing for an easier weld.

A pair of box-jaw tongs are shown in the last three photographs, but the steps are the same for open-jaw tongs.

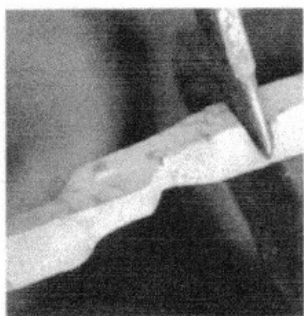
A piece of $\frac{3}{8}$ " diameter round bar was used for the rivet. A spacer—in this case a $\frac{3}{8}$ " nut, was used to center the rivet during the riveting over of the first side.

Using a short piece of stock of the required size for the

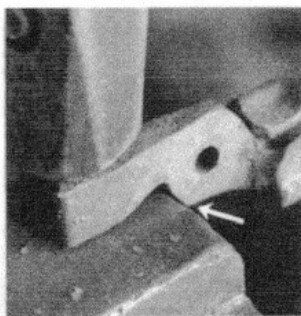
finished tongs, the jaws were adjusted first. Remember that the short piece of stock is now quite hot!

The jaws, boss and rivet are cooled and the reins adjusted to suit your preferences. A vise can be used at this point.

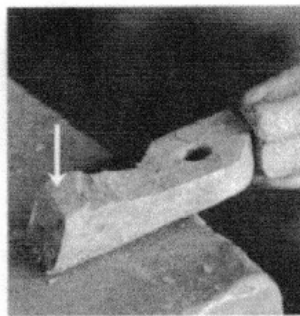
23 instructors had completed multiple styles of tongs at the end of the day. Thanks go to the CBA educational team for putting on the training as well as to the Weaverville smiths for hosting the event.



Sever the jaw and boss assembly from the parent bar



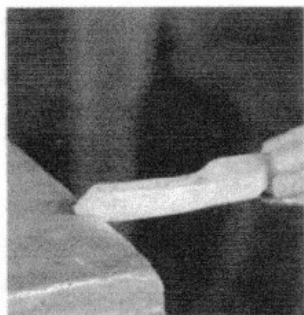
Protect the corner of the boss as you draw down the rein



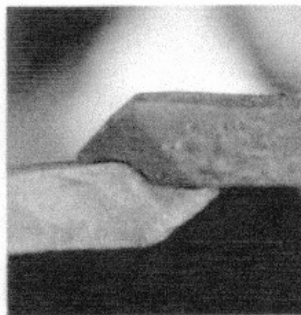
Also preserve the slope of the cut to help with the weld scarf as you work



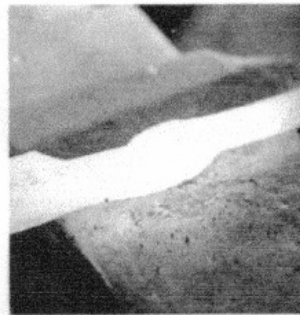
Working from just two sides helps preserve the slope and makes an easy scarf prep



Create the step of the weld scarf



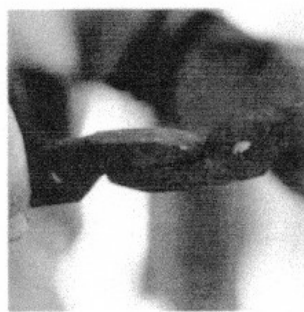
One of the secrets to forge welding is to make sure the scarfs fit before welding



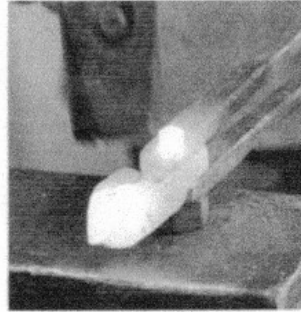
Make the weld, ensuring that the toe of both scarfs are blended into the other stock



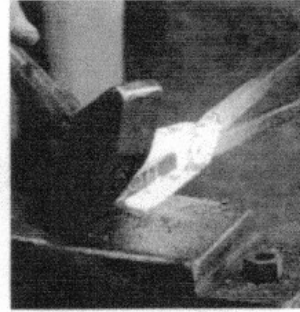
Draw down the reins over the bick for efficiency and dress on the anvil face



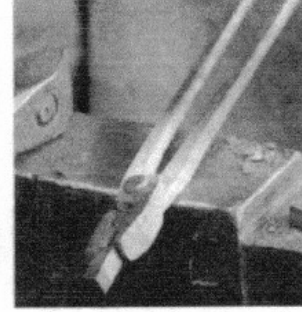
If you are consistent in your work the jaws should fit together without modification



Round bar will serve as a rivet, with a spacer (nut) to help with even distribution

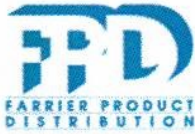


Adjust the jaws of the tongs by using the appropriate sized stock and closing the jaws



Once adjusted, quench the jaws and adjust the reins to suit your grip

Nature Farms Farrier Supply Annual Free Spring Clinic



We will be hosting Clinician Michael Wildenstein thanks to our Sponsor
Farrier Products Distribution.

Saturday June 8th , at
Nature Farms Shop

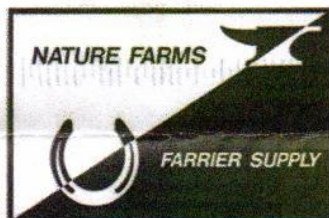
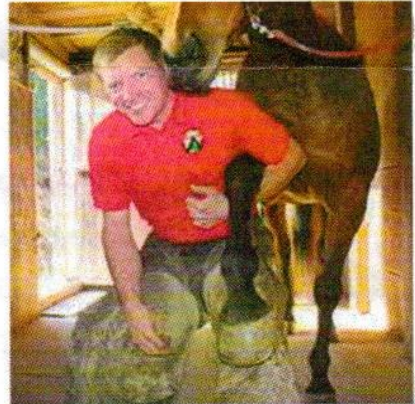
Doors Open @ 8am

Lunch will be provided

5% OFF through out
the store *paid for on the
day of the clinic*

Door Prizes and real
Hospitality!

Clinician Michael Wildenstein, CJF, FWCF Hons is from upstate New York where he continues his passion working with his heavy horses in the woods. Mike started shoeing beside his grandfather while in high school. Though college he studied forestry, biology and education; and became a teacher. He furthered his knowledge by attending Rocky Irons Farrier School in Turo, Nova Scotia and the Farrier School at Cornell University. From 1991-2010 Mike was the resident farrier at Cornell, earning a position of adjunct associate professor and taught students studying farriery, veterinary, and agriculture. He also worked on lame horses referred to the Cornell College of Veterinary Medicine. Mike recently joined the FPD team of clinicians to help further the company goal of contributing to the industry with a multitude of educational programs.



Nature Farms Farrier Supply

3541 National Drive

Norman, OK 73069

Phone: 405-307-8031

Fax: 405-307-7699

Toll Free: 800-460-6759

E-mail: naturefarms@sbcglobal.net

Like our page on Facebook!

I-35 Norman take exit 112

Take the ramp to W. Tecumseh Rd

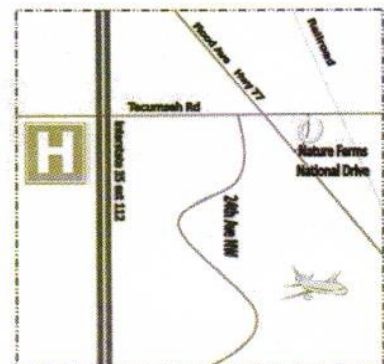
Travel East on W. Tecumseh Rd .5 miles

Turn Right on National Drive

Note

-Nature Farms is behind the red roof stucco building

-The railroad tracks are too far.



2013 Meeting schedule

SE Region (1st Sat)

Jan..**open**
Feb..Eddie Horton
March..Bill Phillips
April.. **Open**
May..Eddie Horton

June..**open**
July..**open**
Aug..Eddie Horton
Sept. **Open**
Oct. **Open**
Nov. Bill Phillips
Dec. **Open**

NE Region (2nd Sat)

Jan..**open**
Feb..Bill Kendall
March..Doug Redden
April..Ed McCormach
May..Omar Reed/Gerald
Brostek

June..Mike Krudoski
July..Chuck Waite
Aug. **open**
Sept. James Maybery
Oct. **Open**
Nov. **open**
Dec. **open**

SC Region (3rd Sat)

Jan. Gerald Franklin
Feb..Byron Doner
March..Bob McKelvin
April..State picnic
May..Heather Morefield

June..Larry Mills
July.. Bill Davis
Aug..Richard Simpson
Sept. Jim Dyer
Oct. SCABA Conference
Nov. **open**
Dec. **open**

NW Region (4th Sat)

Jan..**open**
Feb..Bob Kennemar
March..Bob Rea
April.. Don Garner-
May..Gary seigris

June..Mandell Greteman
July..Roy Bell
Aug. Cheryl Overstreet
Sept. Dorvan Ivey
Oct. Don Garner
Nov. Mandell Greteman
Dec. **open**

Saltfork Craftsman Regional Meeting Hosting Form

Region _____ SE _____ NE _____ S/C _____ NW

Date: Month _____ day _____ [correct Saturday for region selected above]

Name _____

Address _____

Phone/email _____

Trade item _____

Lunch provided _____ yes _____ no

Directions or provide a map to the meeting location along with this form.

****All meeting are scheduled on a first come basis. Completely filled out form MUST be received by editor no later than the 23rd of the month TWO months PRIOR to the meeting month.**

Completed forms can be mailed or emailed.

You will receive a conformation by email or postcard.

A form must be filled out for each meeting.

SCABA Shop and Swap

For Sale:

6" round nosed pliers (great for putting scrolls on small items) \$5.00 each. Brooms tied, \$25.00 on your handle (**extra charge if I have to make handle longer**)

Contact Diana Davis at Diana.copperrose@gmail.com

For Sale:

24"(wide) x 1"(thick) Ceramic fiber blanket (similar to Kao-wool) \$1.00 per inch of length. Twisted solid cable 1/2" diameter \$2.00 per ft.

Contact Larry Roderick at 940-237-2814

Wanted:

Advertising Coal Hammers, Contact Mike George at 1-580-327-5235 or o Mike-Marideth@sbglobal.net

Club Coal

Saltfork Craftsmen has coal for sale. Coal is in 1-2" size pieces The coal is \$140.00/ton or .07 /pound to members **No sales to non-members.**

NW Region coal pile is located in Douglas, OK. If you make arrangements well in advance, Tom Nelson can load your truck or trailer with his skid steer loader for a fee of \$10 to be paid directly to Tom. Tom has moved his skid steer and must now haul the loader to the coal pile to load you out, hence the \$10 charge. You may opt to load your own coal without using Tom's loader. The coal can be weighed out at the Douglas Coop Elevator scales. Contact Tom Nelson (580-862-7691) to make arrangements to pick up a load. Do not call Tom after 9 PM!! Bring your own containers and shovels. Payment for the coal (\$.07 per pound) should be made directly to the Saltfork Treasurer.

NE Region coal location: Charlie McGee has coal to sell. He lives in the Skiatook, Oklahoma area. His contact information is:

littleironworks@gmail.com or
(home) 918-245-7279 or (cell) 918-639-8779



Show your pride in SCABA.

License plates for \$5.00 each.

We have coffee cups for \$9.00 with two images on them and We have a new shipment of caps for \$10.00. There will be caps at the SC meetings and- Dan Cowart has cups and caps for the picnic.

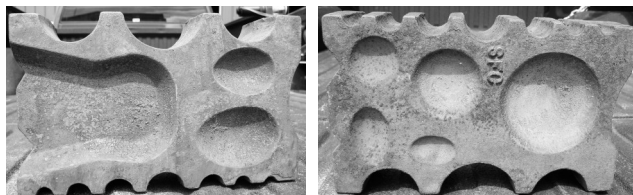


SCABA swage blocks

\$100.00 plus shipping to members. (1st block)

\$120.00 plus shipping to non-members

Contact Bill Kendall for more information



SCABA Floor Cones are now available from Bill Kendall, Byron Donor and Gerald Franklin. The price is \$200 plus shipping and handling.

Sell and Repair Power Hammers (Little Giant) in Tioga Texas. 1-940-580-0032 Ask for Pierre

For sale: 2- 25# Little Giant

1- 50# Little Giant

All new parts, Call for prices...1-940-580-0032 ask for Pierre

SCABA membership application

New _____ Renewal _____

January 2013—March 31— 2014_

Please accept my application

Date: _____

First Name _____ Last Name _____

Married? ___ Yes ___ No Spouses Name _____

Address _____

City _____ State _____ ZIP _____


Home Phone (____) _____ Work Phone (____) _____

E-Mail _____ ABANA Member? ___ Yes ___ No

I have enclosed \$20.00 (per year) for dues to March 30, 201_

Signed _____

Return to: Saltfork Craftsmen Membership, Diana Davis 23966 NE Wolf Rd. Fletcher, Okla. 73541

 ABANA	NEW & RENEWAL MEMBERSHIPS
--	--------------------------------------

Name : _____ Membership ID # _____
(For renewals. Optional but very helpful)

Business Name (optional) : _____

Street : _____

City : _____ State/Prov : _____

Zip/PC : _____ Country : _____

Phone : _____ Fax : _____

E-mail : _____ Website : _____

Membership Type: ☐ New ☐ Renewal

Regular (US, Mexico, Canada)	One Year — <input type="checkbox"/> \$55	Two Years — <input type="checkbox"/> \$105
Senior Membership (65+, US, Mexico, Canada,)	One Year — <input type="checkbox"/> \$50	Two Years — <input type="checkbox"/> \$95
Full-time Student (US, Mexico, Canada)	One Year — <input type="checkbox"/> \$45	Two Years — <input type="checkbox"/> \$85
Foreign	One Year — <input type="checkbox"/> \$65	Two Years — <input type="checkbox"/> \$125
Contributory Membership <i>(amounts above \$55 / year may be tax deductible)</i>	One Year — <input type="checkbox"/> \$150 and up — \$ _____	Two Years — <input type="checkbox"/> \$295 and up — \$ _____
Public Library (US, Mexico, Canada)	One Year — <input type="checkbox"/> \$45	
Educational Institution	One Year — <input type="checkbox"/> \$250	

Saltfork Craftsmen Artist Blacksmith Assoc.Inc.
10380 N. 4010 Road
Wann, Okla.74083

U S Postage Paid
Non Profit Organization
Permit #8
Sterling Ok.
73567

Address Service Requested

